

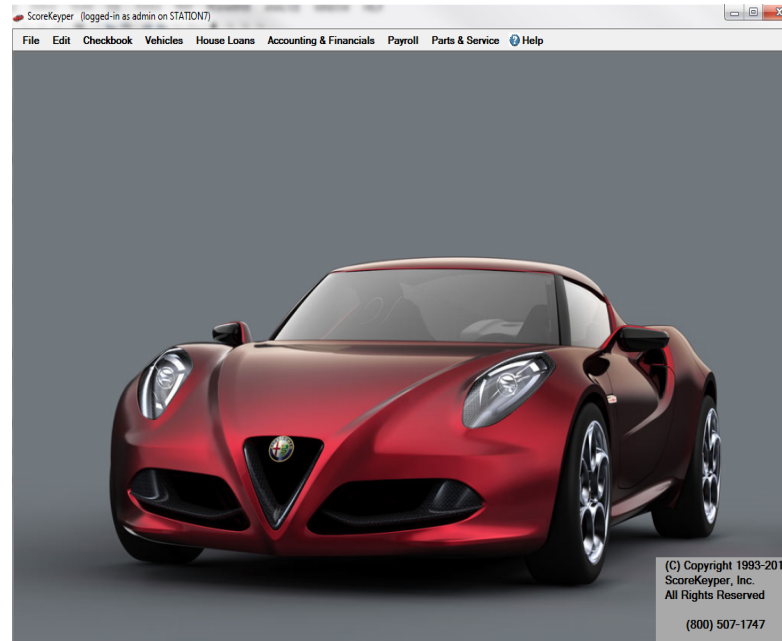


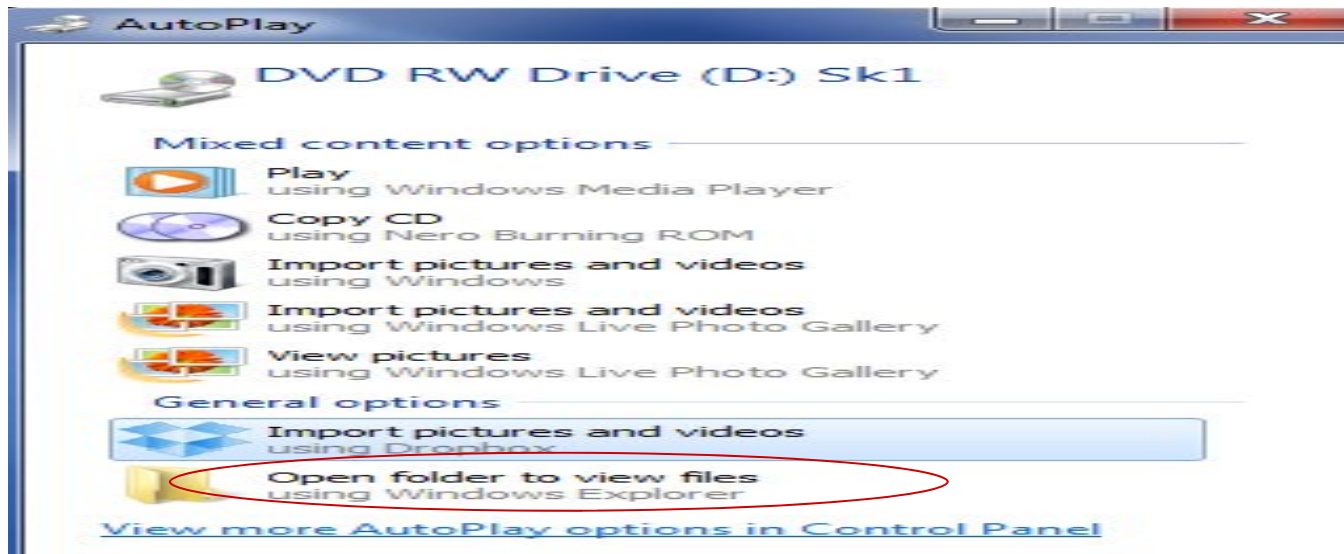
ScoreKeyper™ - Jump Start

## Welcome to **ScoreKeyper!**

You'll be up and running  
in about thirty minutes.

- Be sure to follow the instructions carefully, step-by-step.
- Note: *Click* means left-click unless otherwise indicated.





1. Insert disk in the DVD Drive of the main computer (server)
2. Click Open folder to view files

If this menu does Not appear

Windows XP, Vista, 7

Click the Windows start button, then click Computer

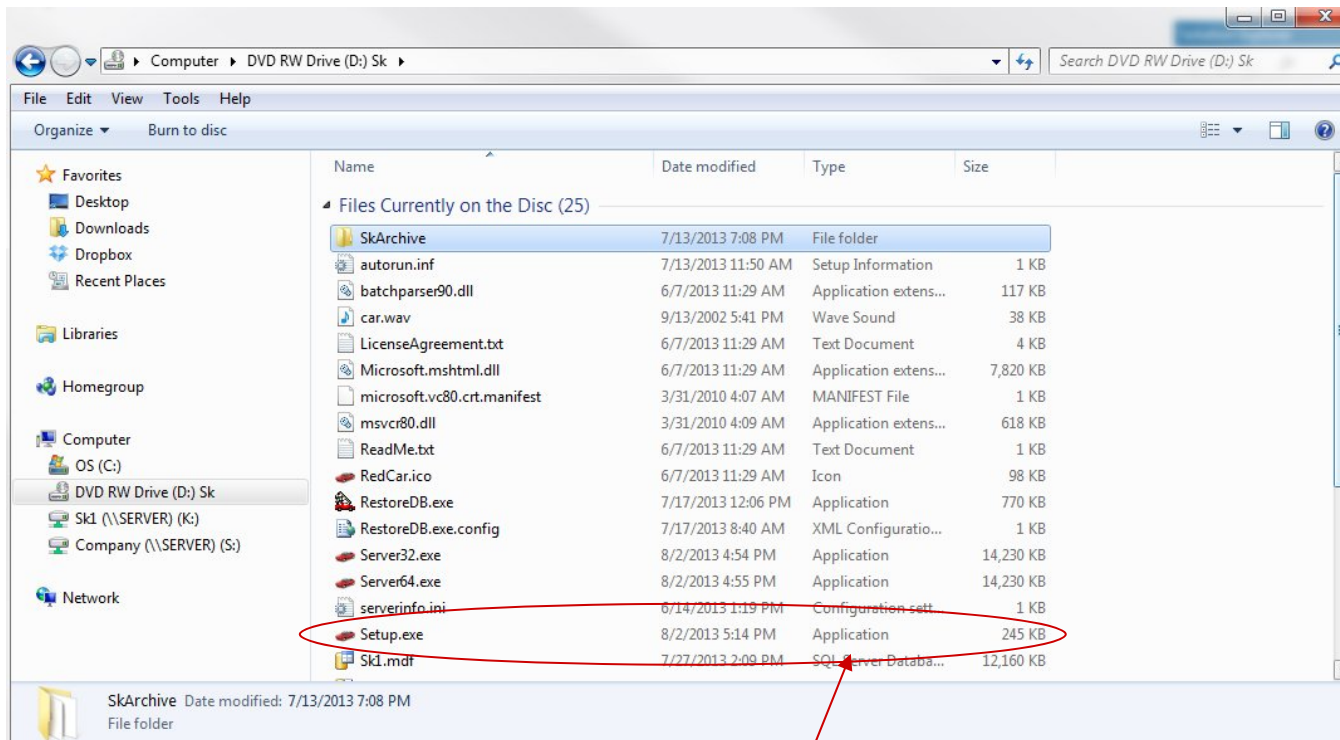
Double-click the CD/DVD Drive icon

Windows 8

The contents of the DVD may automatically display on the screen (see next page)

If not, click the Search icon, type in Computer, then click "Computer" on left

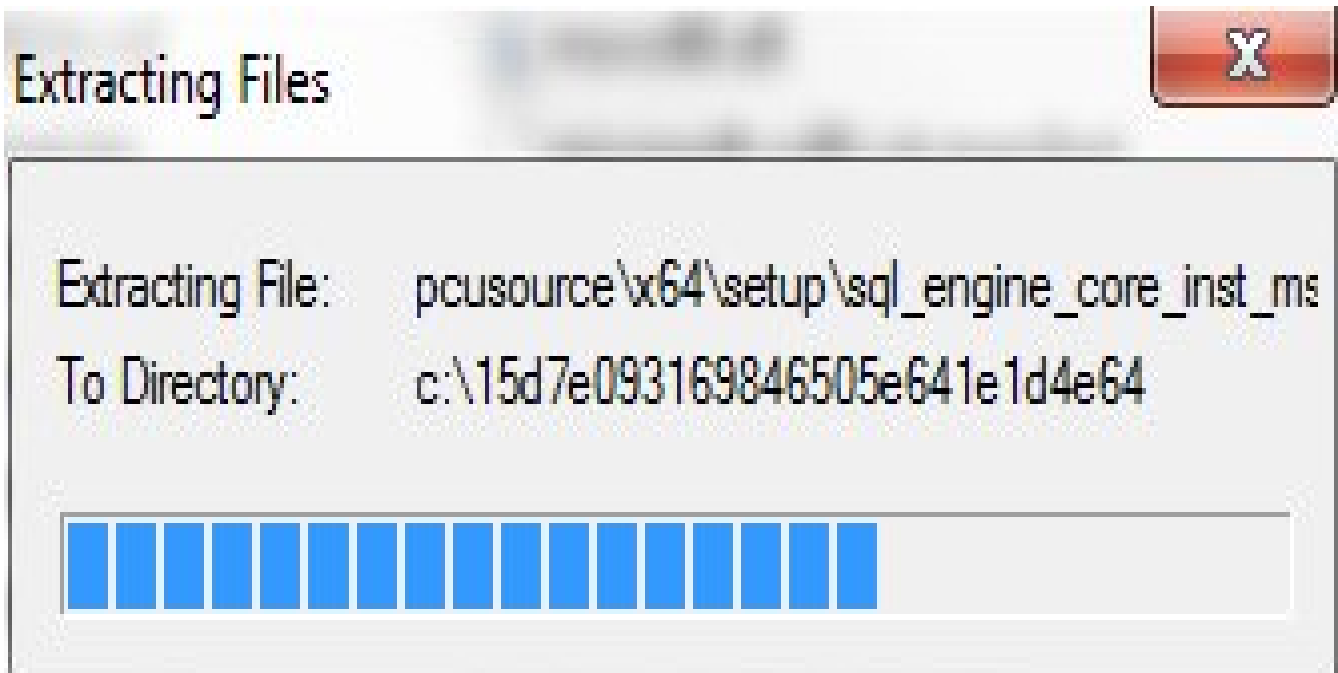
Double-click the CD/DVD Drive icon



Double-click Setup or Setup.exe (Note: Look for “Application”)



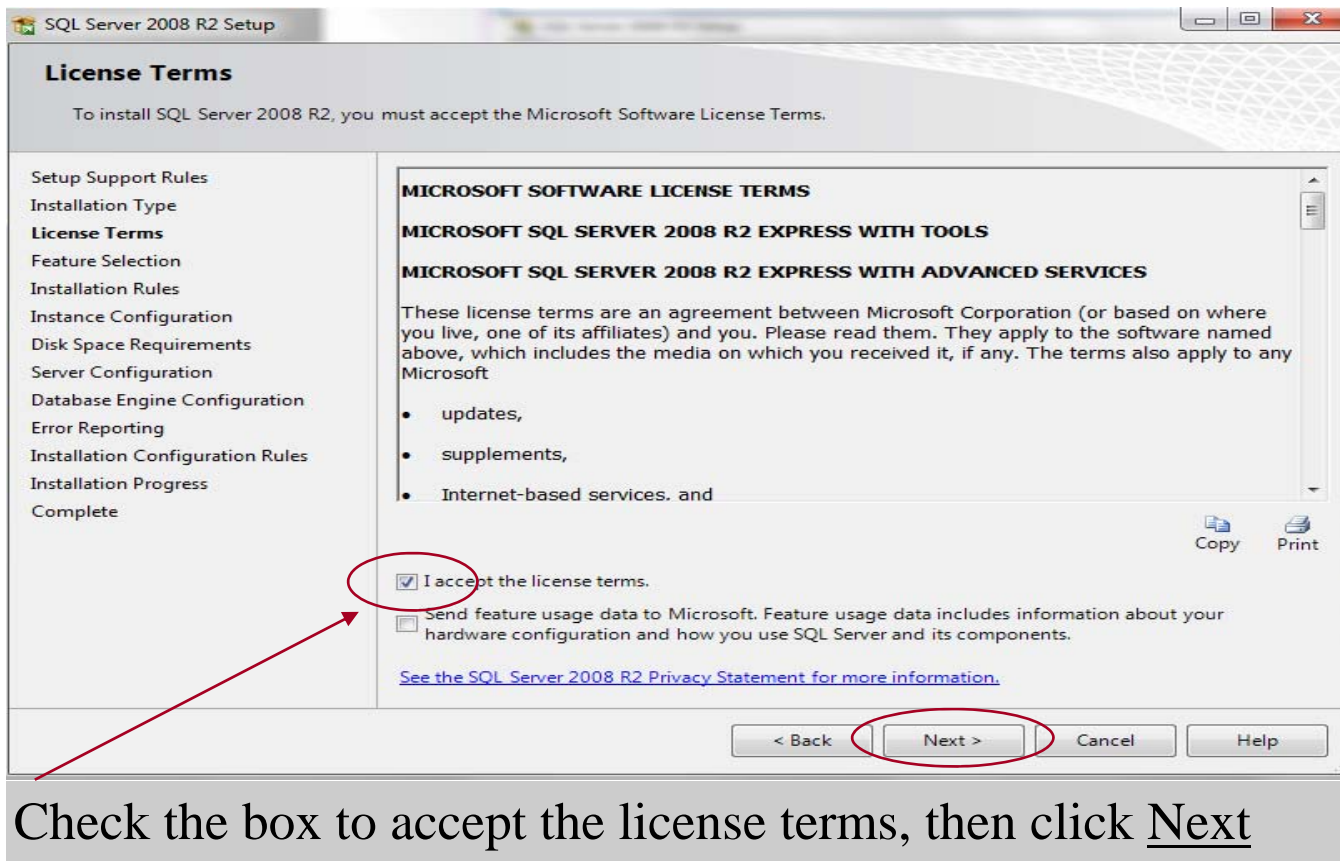
Install to main computer (server):  
Click SQL Server - 32b if a 32-bit machine OR  
Click SQL Server - 64b if a 64-bit machine



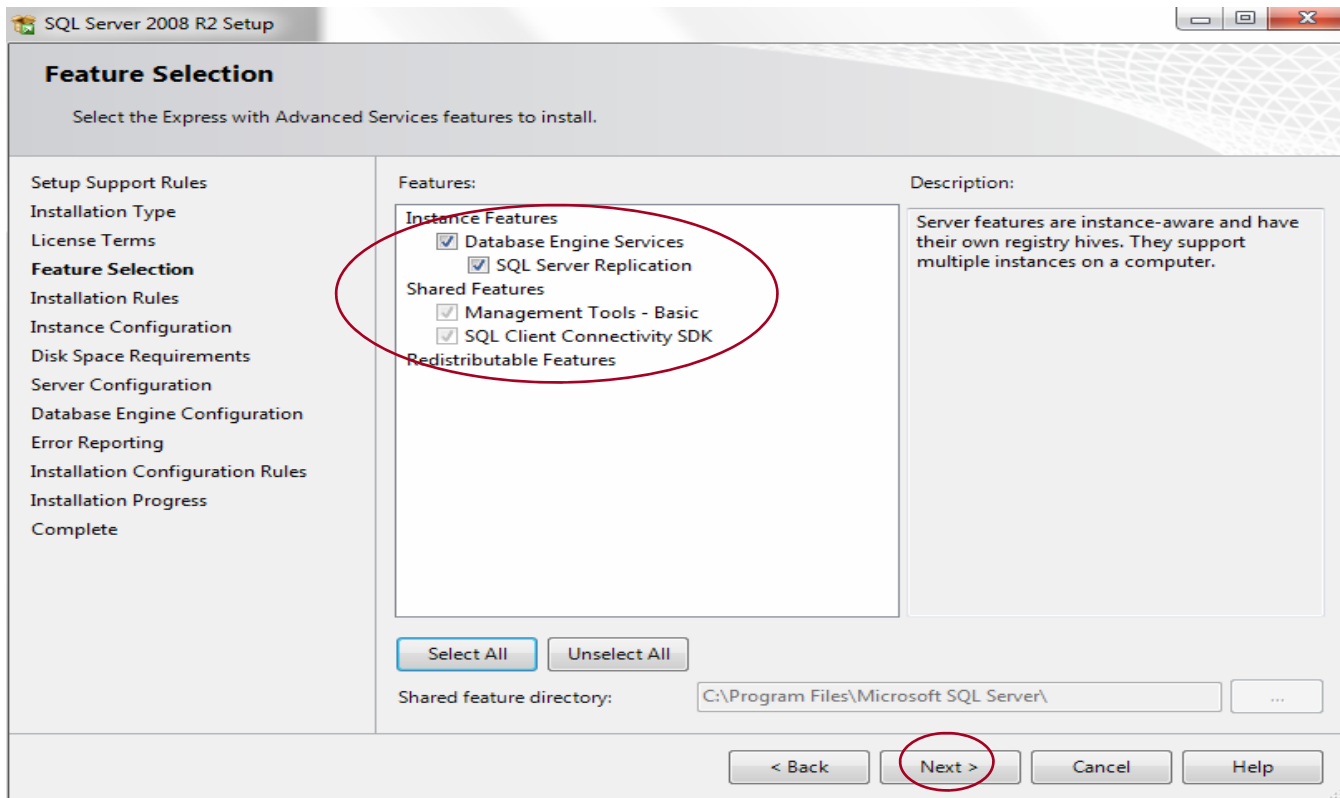
Allow up to two minutes for files to extract  
This screen will then disappear  
Standby for up to one minute until the screen on the next page appears



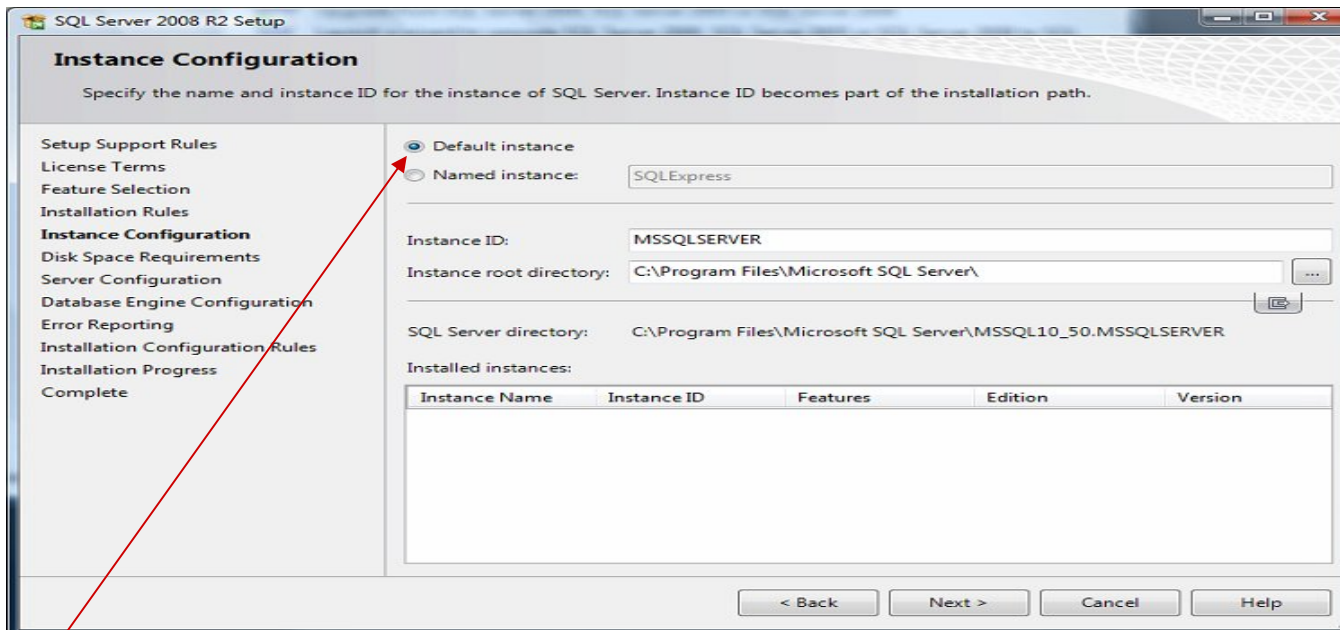
1. Click New installation
2. Standby for up to one minute while SQL Server processes the current operation





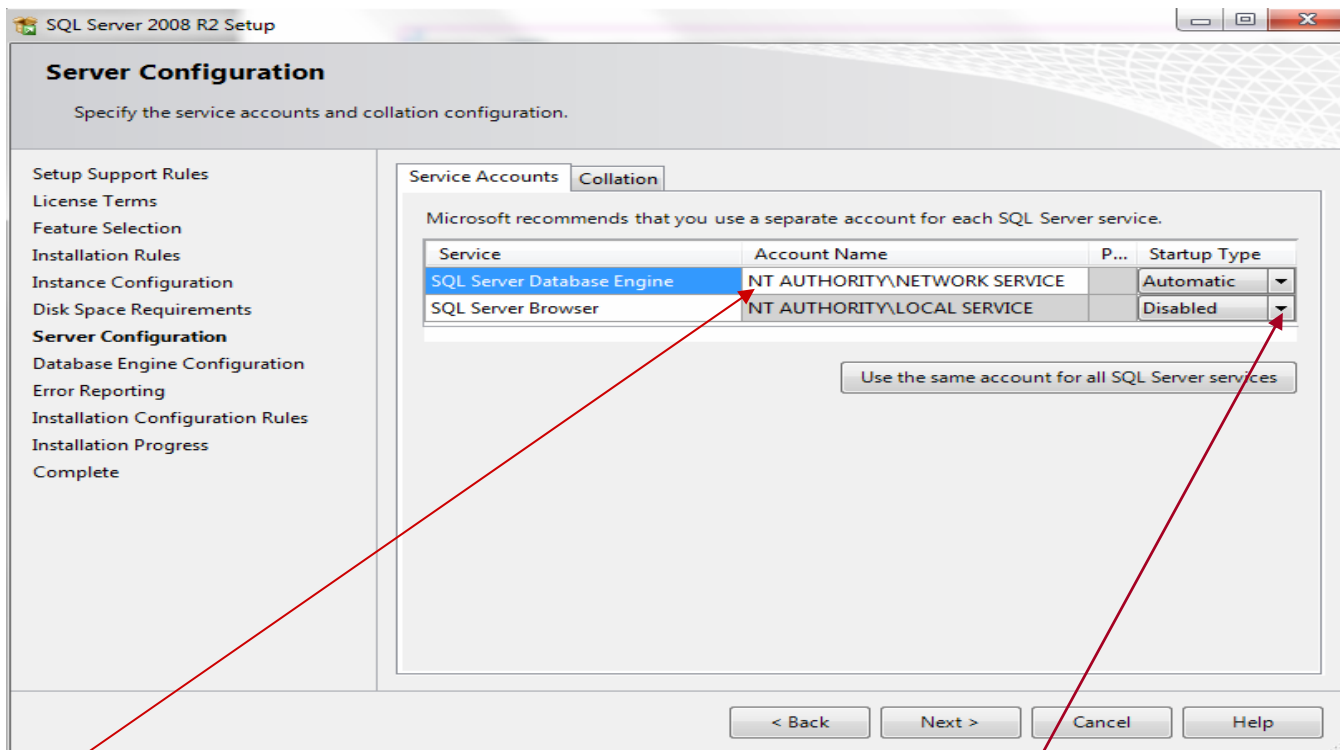


Make sure all four boxes are checked, then click Next

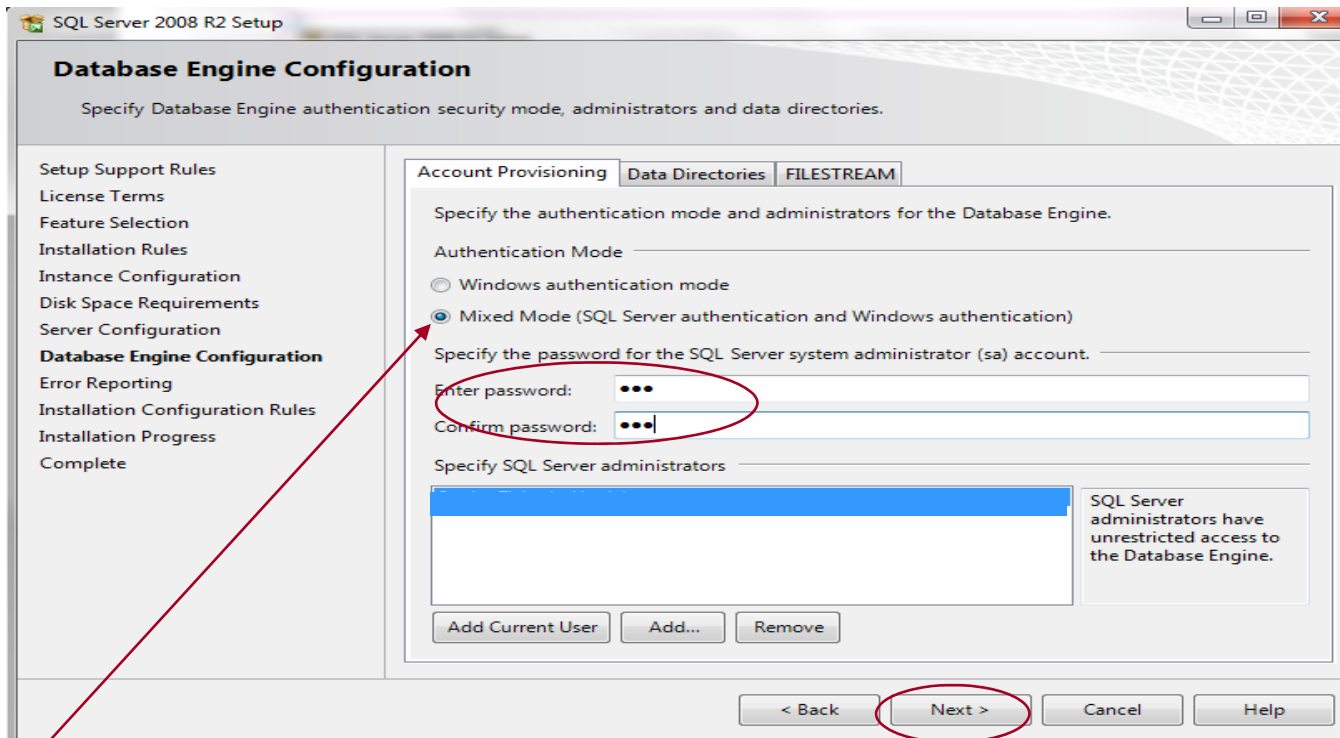


Select Default instance, then click Next

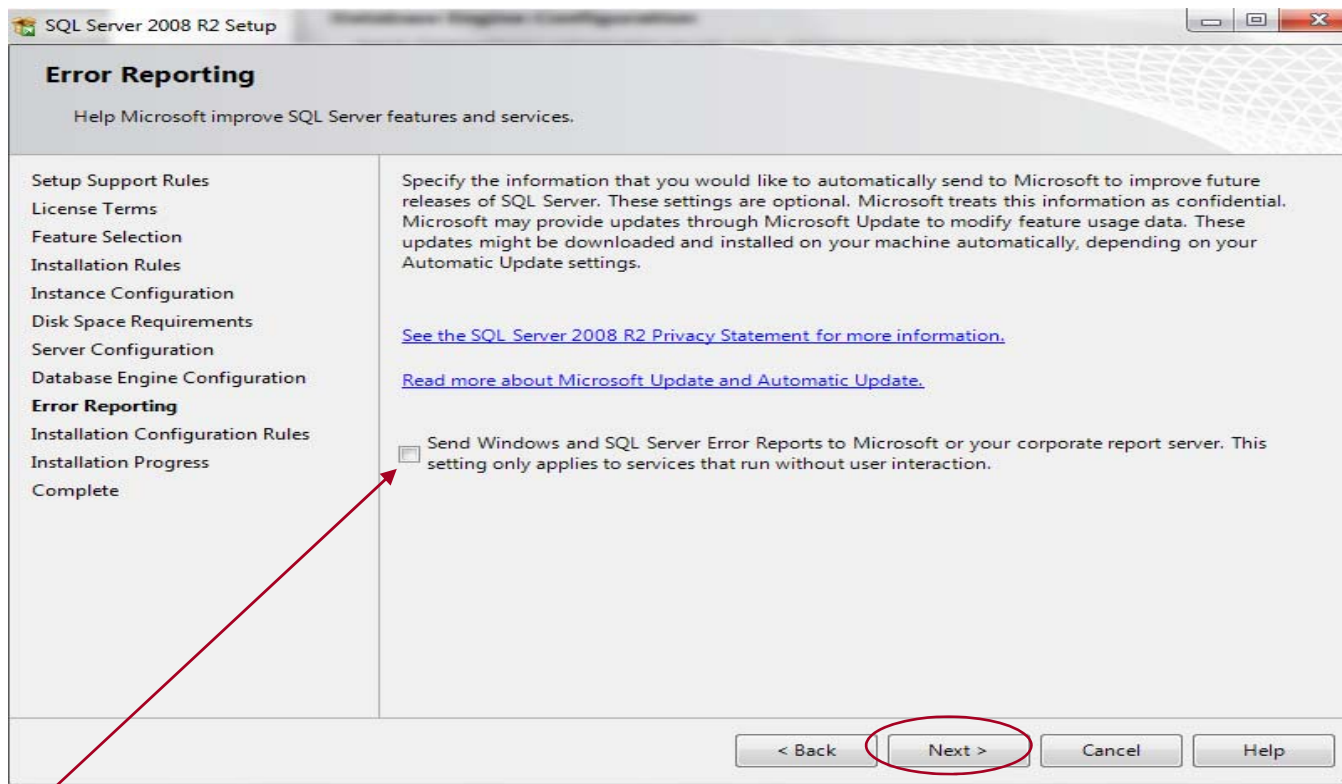
(If you are prevented from installing a default instance, call tech support for alternate instructions)



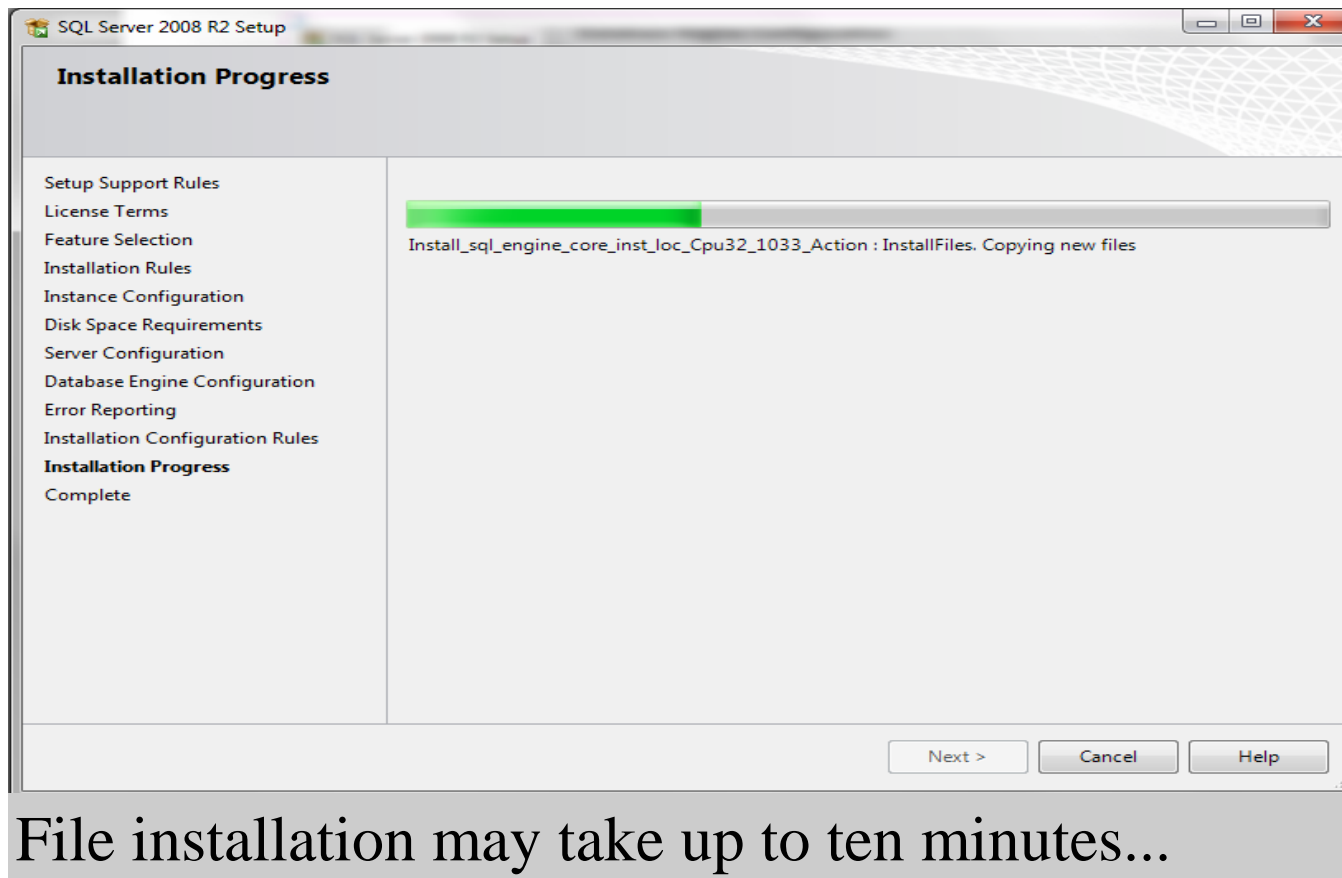
1. On the top line, select NT AUTHORITY\NETWORK SERVICE as the Account Name
2. On the second line, click the arrow next to Disabled and select Automatic.
3. Click Next.

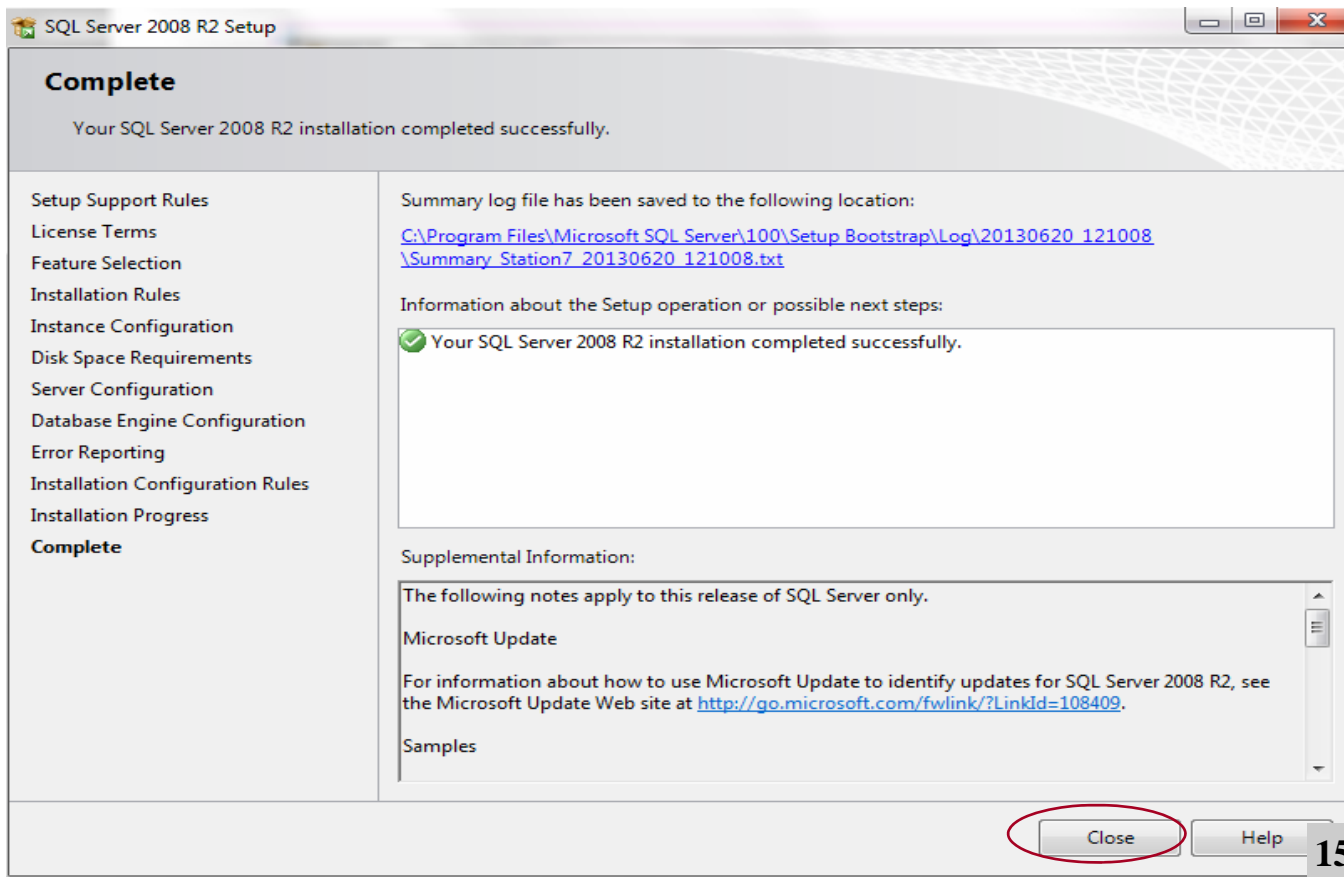


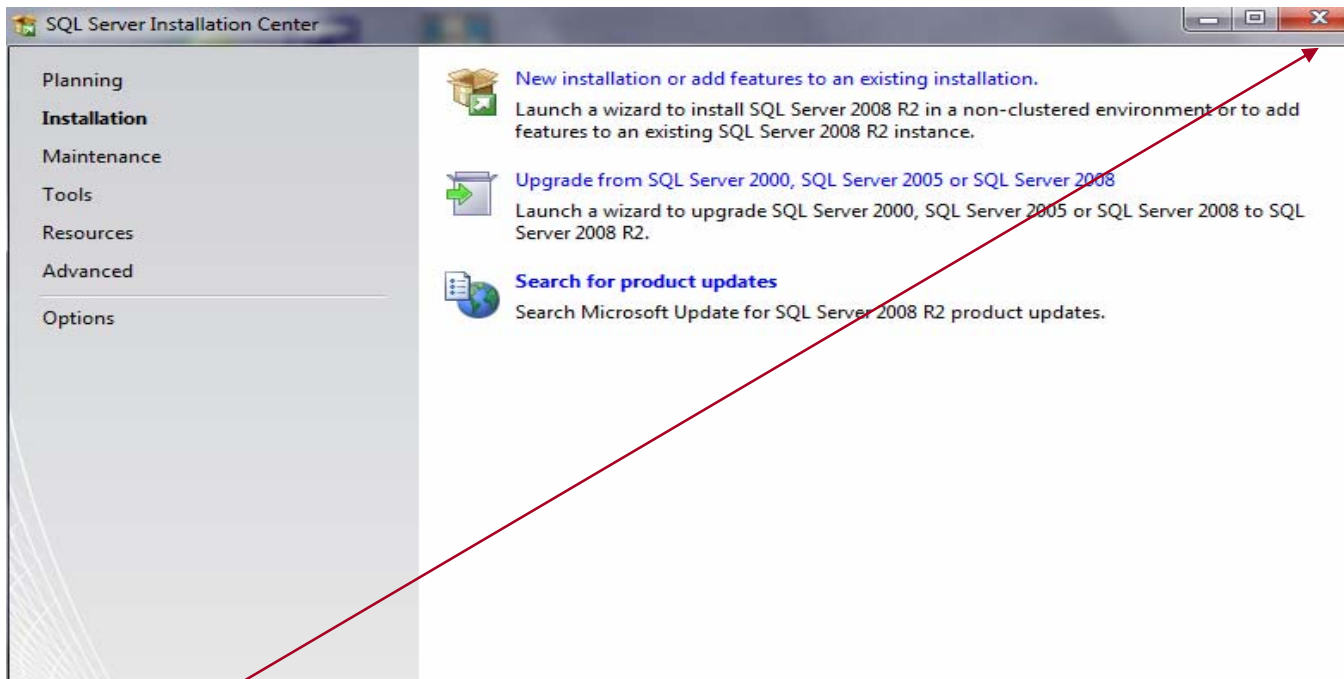
1. Check Mixed Mode
2. The password is 123
3. Click Next



Leave this box unchecked and click Next

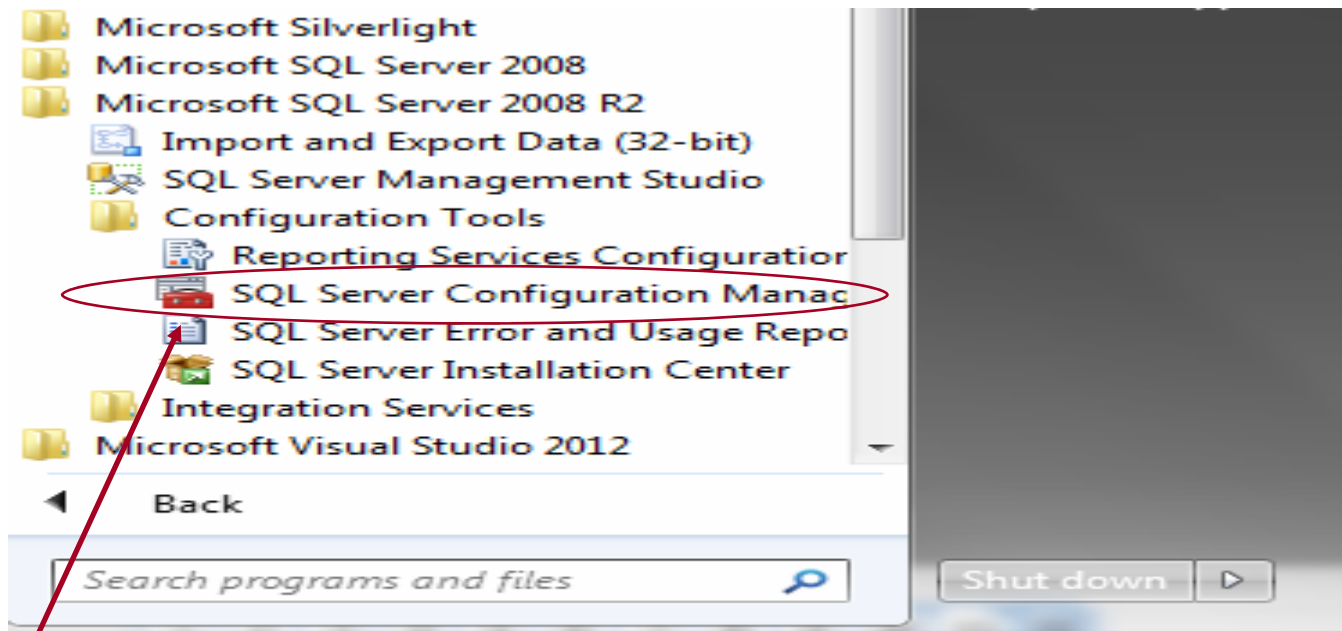






Click **X** to exit SQL Server installation  
Do **not** exit ScoreKeeper setup menu





IF Windows XP, Vista, 7:

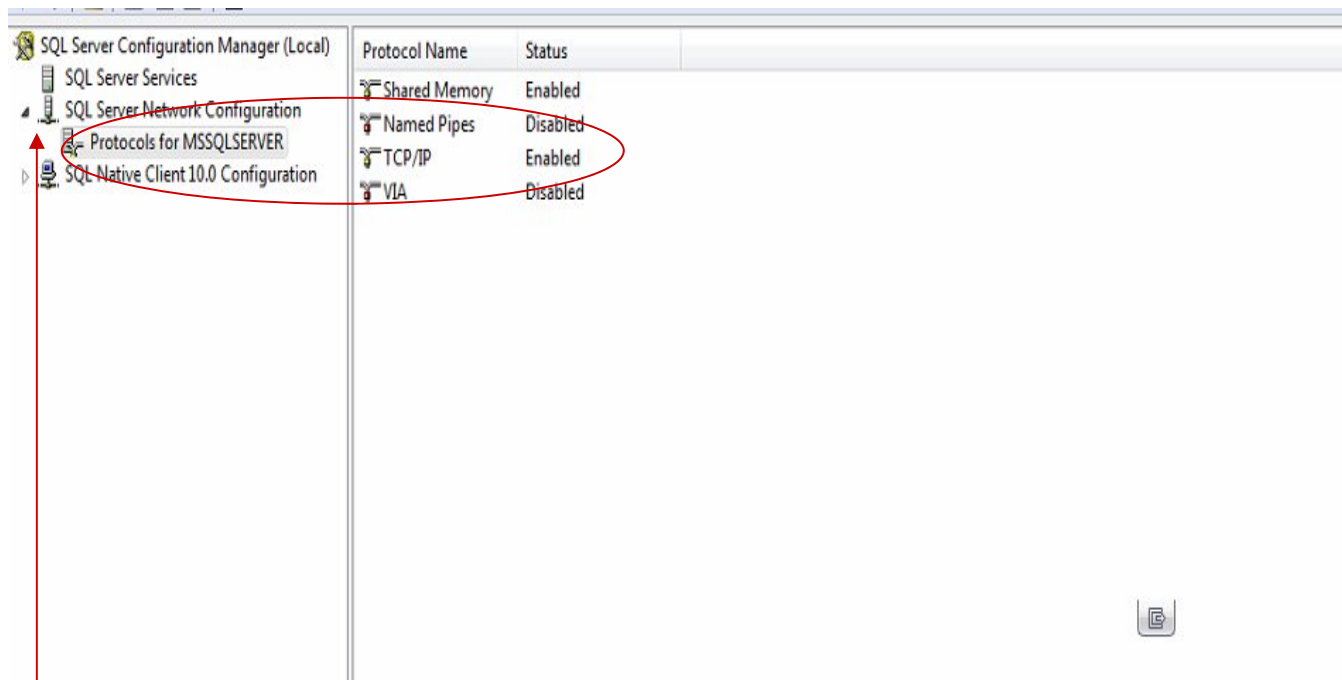
Click the Windows start button

Click All Programs

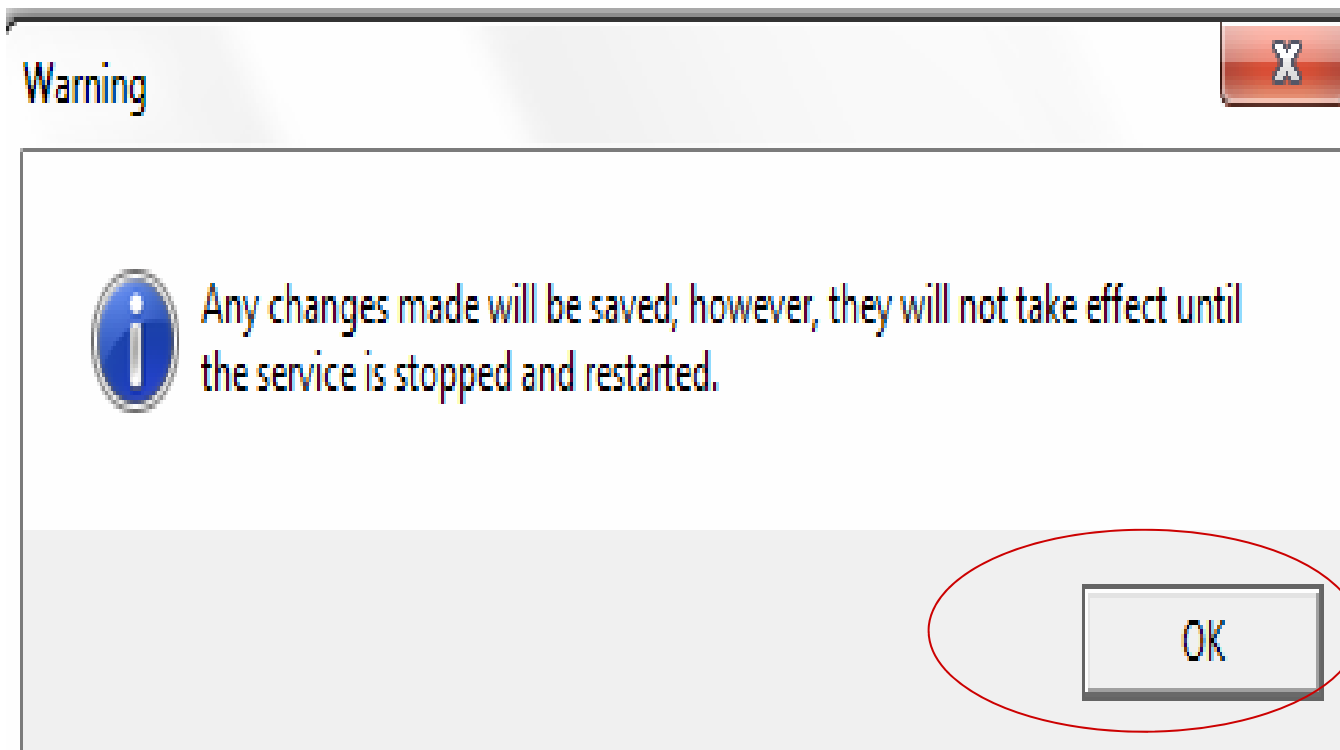
Click Microsoft SQL Server 2008 R2, then Configuration Tools, then SQL Server Configuration Manager

IF Windows 8:

Click the Start icon, then click the SQL Server Configuration Manager tile



1. Click the arrow next to SQL Server Network Configuration
2. Click Protocols for MSSQLSERVER
3. Right-click TCP/IP
4. Click Enable

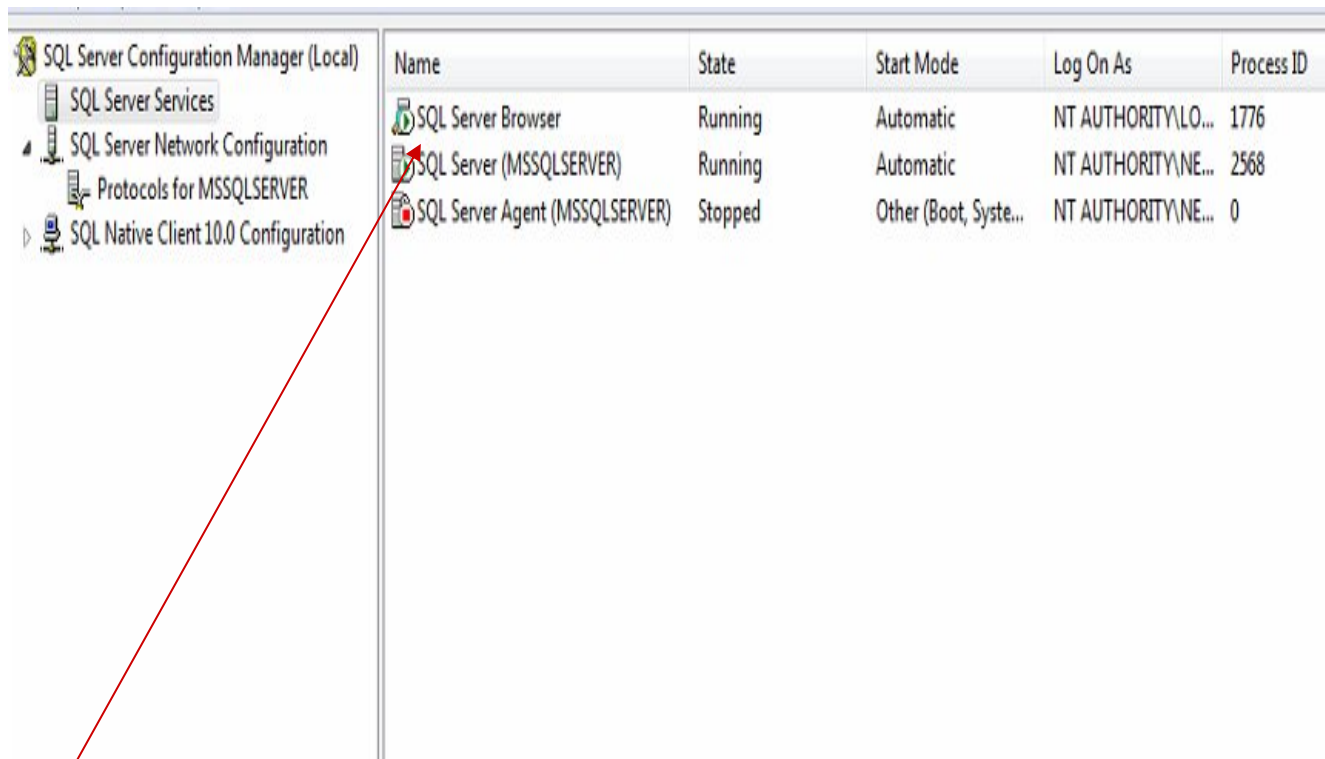


Click OK

The screenshot shows the SQL Server Configuration Manager interface. On the left, a tree view is expanded to 'SQL Server Services'. A red arrow points from the text below to this item. The main pane displays a table of services.

Name	State	Start Mode	Log On As	Process ID
SQL Server Browser	Running	Automatic	NT AUTHORITY\LO...	1776
SQL Server (MSSQLSERVER)	Running	Automatic	NT AUTHORITY\NE...	2568
SQL Server Agent (MSSQLSERVER)	Stopped	Other (Boot, Syste...	NT AUTHORITY\NE...	0

Click SQL Server Services



SQL Server Configuration Manager (Local)

- SQL Server Services
- SQL Server Network Configuration
- Protocols for MSSQLSERVER
- SQL Native Client 10.0 Configuration

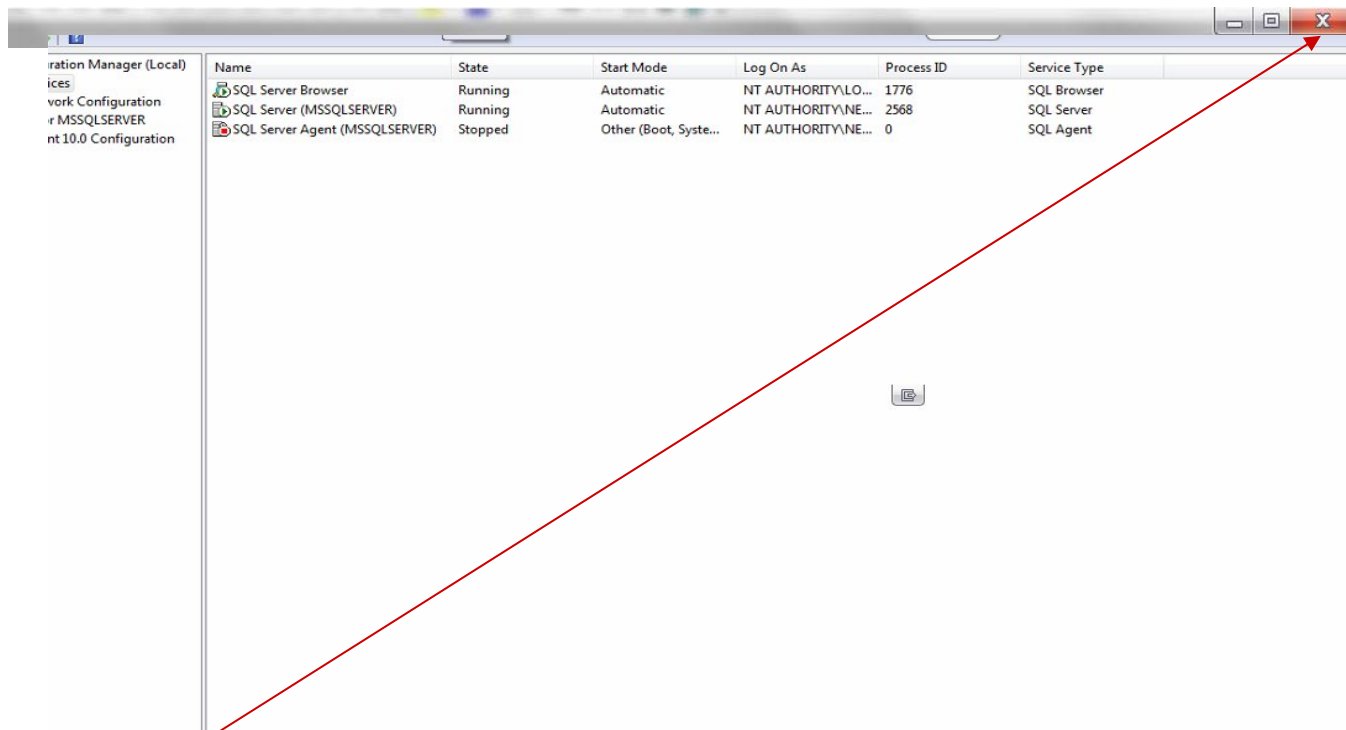
Name	State	Start Mode	Log On As	Process ID
SQL Server Browser	Running	Automatic	NT AUTHORITY\LO...	1776
SQL Server (MSSQLSERVER)	Running	Automatic	NT AUTHORITY\NE...	2568
SQL Server Agent (MSSQLSERVER)	Stopped	Other (Boot, Syste...	NT AUTHORITY\NE...	0

1. *Right-click* SQL Server Browser
2. Click Restart

The screenshot shows the Windows Services console for 'Local Computer'. The 'SQL Server' folder is expanded, showing three services: 'SQL Server Browser' (Running), 'SQL Server (MSSQLSERVER)' (Running), and 'SQL Server Agent (MSSQLSERVER)' (Stopped). A red arrow points to the 'SQL Server (MSSQLSERVER)' service.

Name	State	Start Mode	Log On As	Process ID	Service Type
SQL Server Browser	Running	Automatic	NT AUTHORITY\LO...	1776	SQL Browser
SQL Server (MSSQLSERVER)	Running	Automatic	NT AUTHORITY\NE...	2568	SQL Server
SQL Server Agent (MSSQLSERVER)	Stopped	Other (Boot, System...)	NT AUTHORITY\NE...	0	SQL Agent

1. Right-click SQL Server (MSSQLSERVER)
2. Click Restart



Click X to close SQL Server Configuration Manager



Click ScoreKeyper 32b - Server if a 32-bit machine OR  
Click ScoreKeyper 64b - Server if a 64-bit machine





Click Next to begin ScoreKeyper installation (v 2013.9.4 in this example)

Setup - ScoreKeyper (v 2013.9.4)

### License Agreement

Please read the following important information before continuing.

Please read the following License Agreement. You must accept the terms of this agreement before continuing with the installation.

END-USER LICENSE AGREEMENT

ScoreKeyper TM

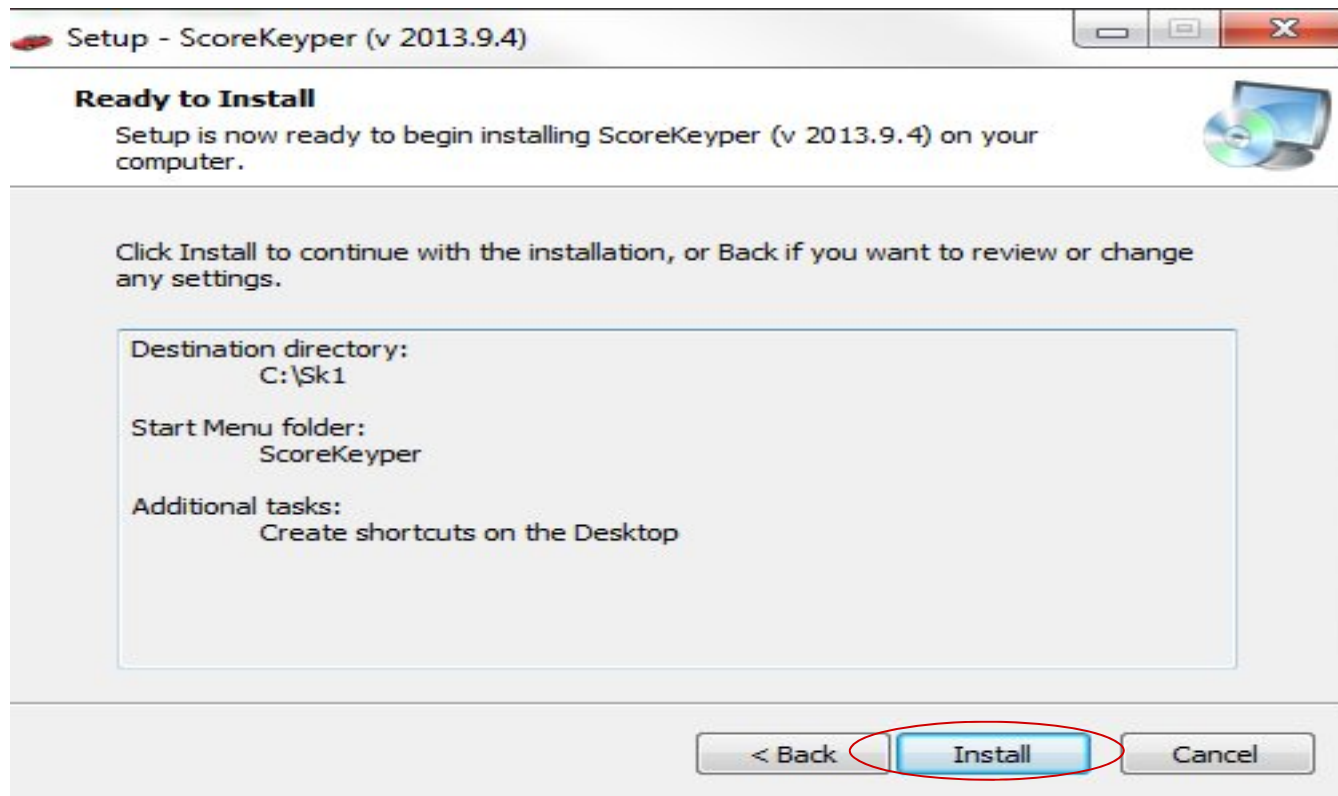
This End-User License Agreement is a legal agreement between you, either an individual or a single entity, and ScoreKeyper, Inc. (SK). By installing, copying, or otherwise using the above software product referred to herein as ScoreKeyper, you agree to be bound by the terms of this agreement.

Clicking "I AGREE" or installing or using ScoreKeyper indicates your consent to be bound by all the terms and conditions of this agreement.

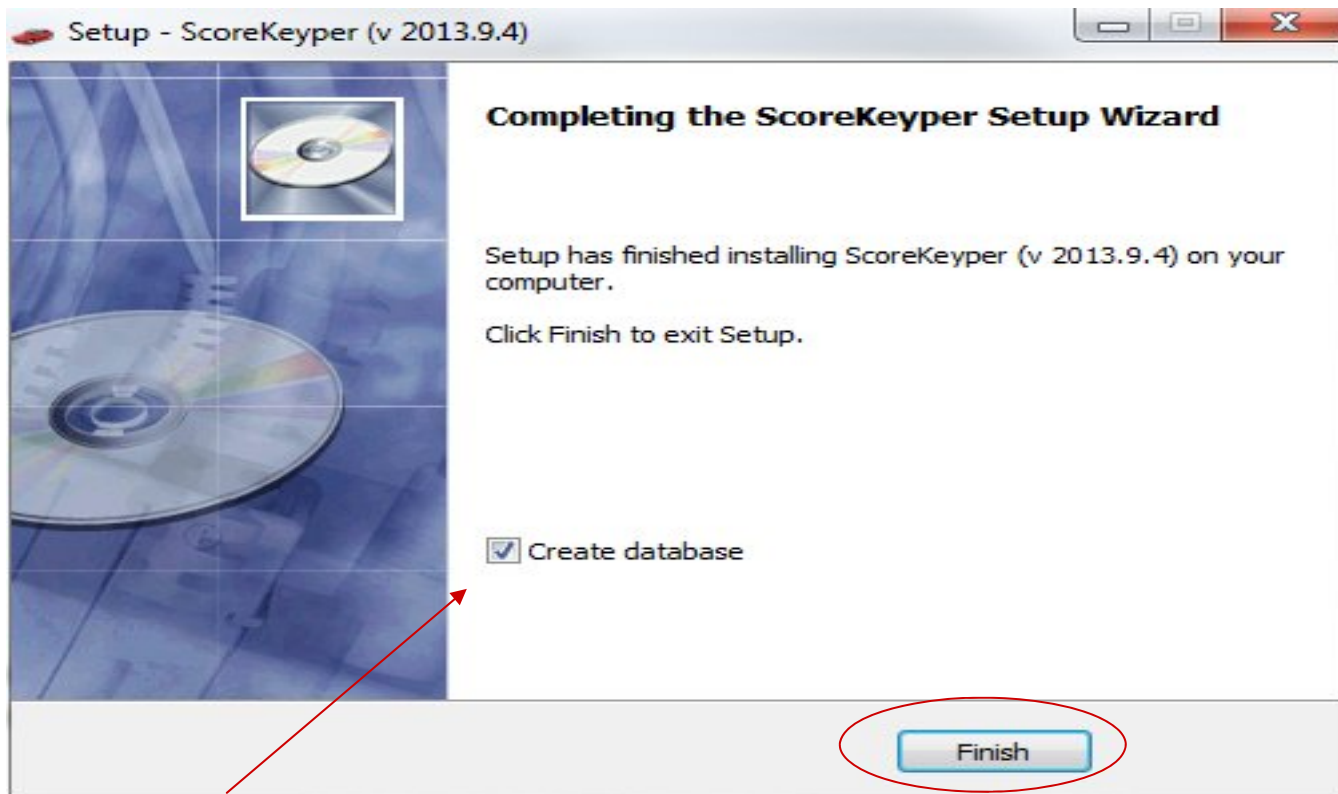
I accept the agreement

< Back   Next >   Cancel

1. Check the box to accept the End-User License Agreement
2. Click Next



Click Install



Check "Create database", then click Finish

### Sk1 - Create Package

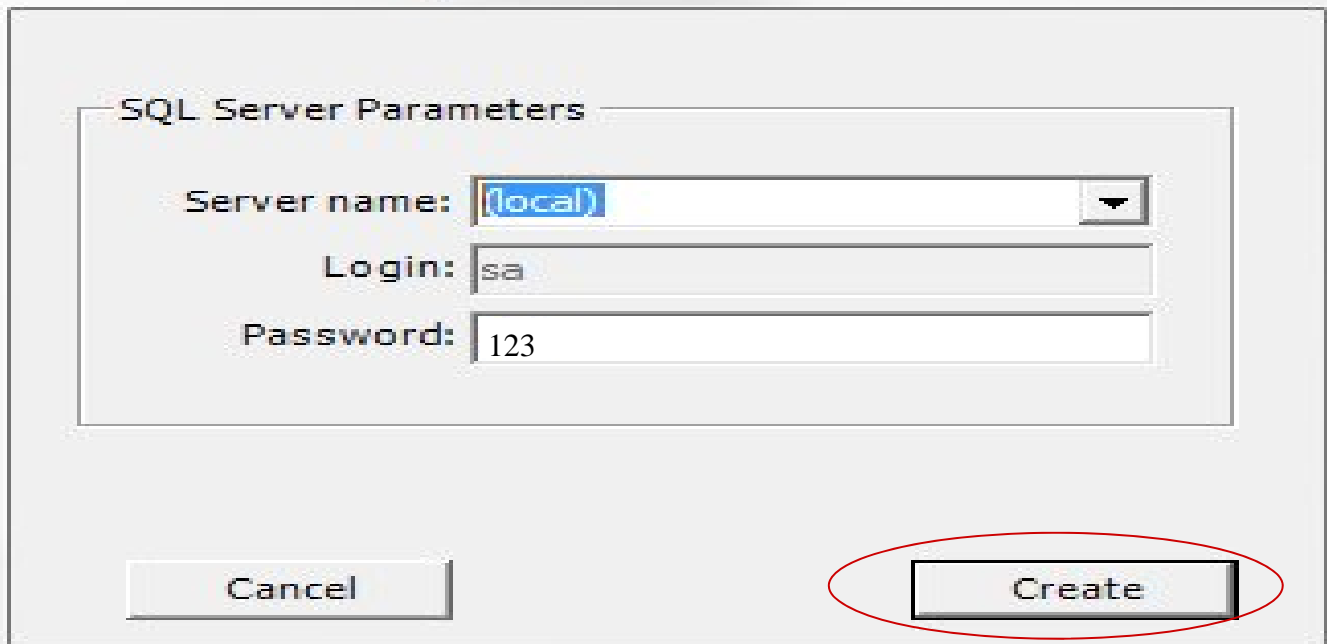
SQL Server Parameters

Server name: (local)

Login: sa

Password: 123

Cancel Create



1. Select (local) from the dropdown list  
The login and password (“sa” and “123”) are filled-in automatically.
2. Click Create

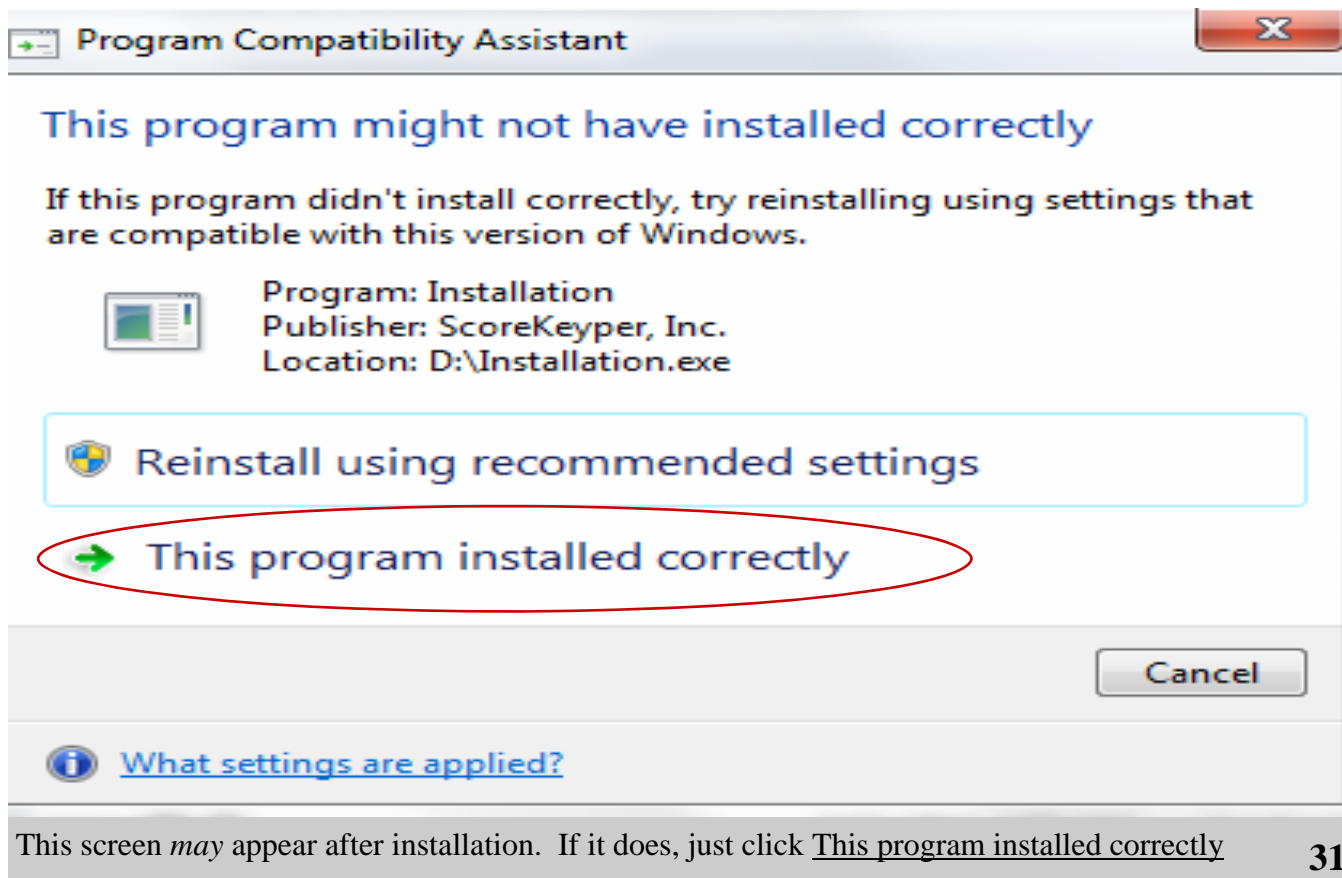
## SQLPackage

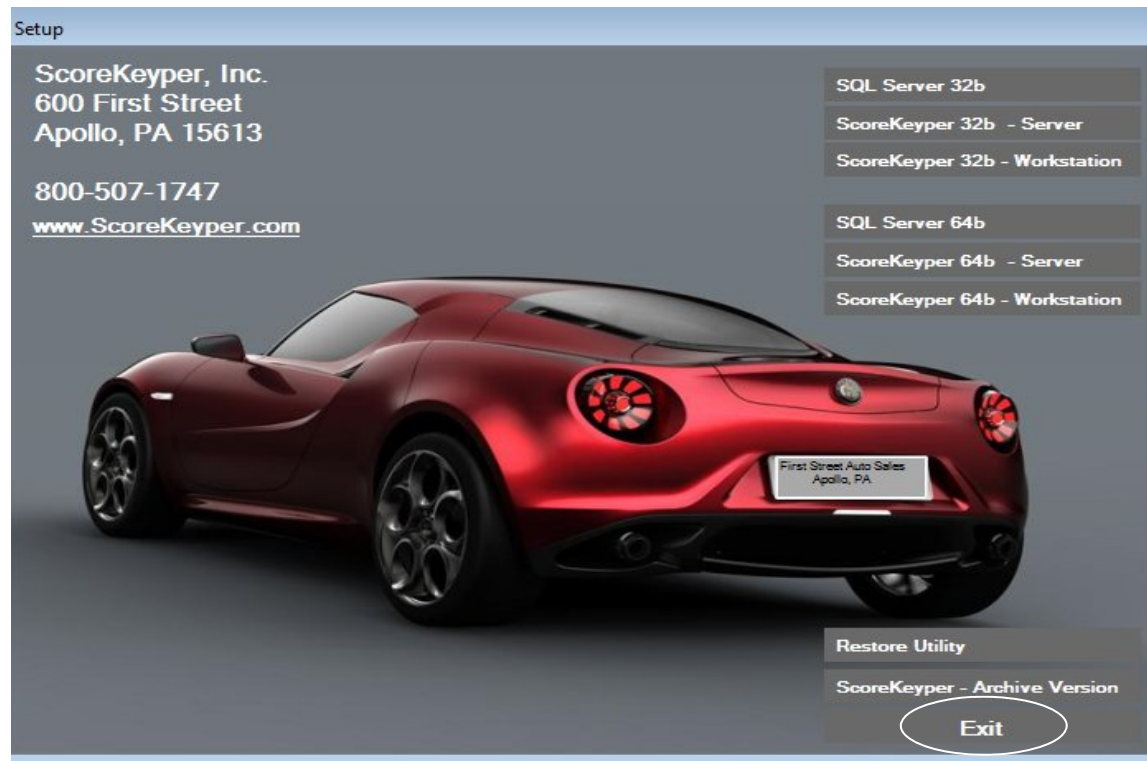


Package executed successfully.



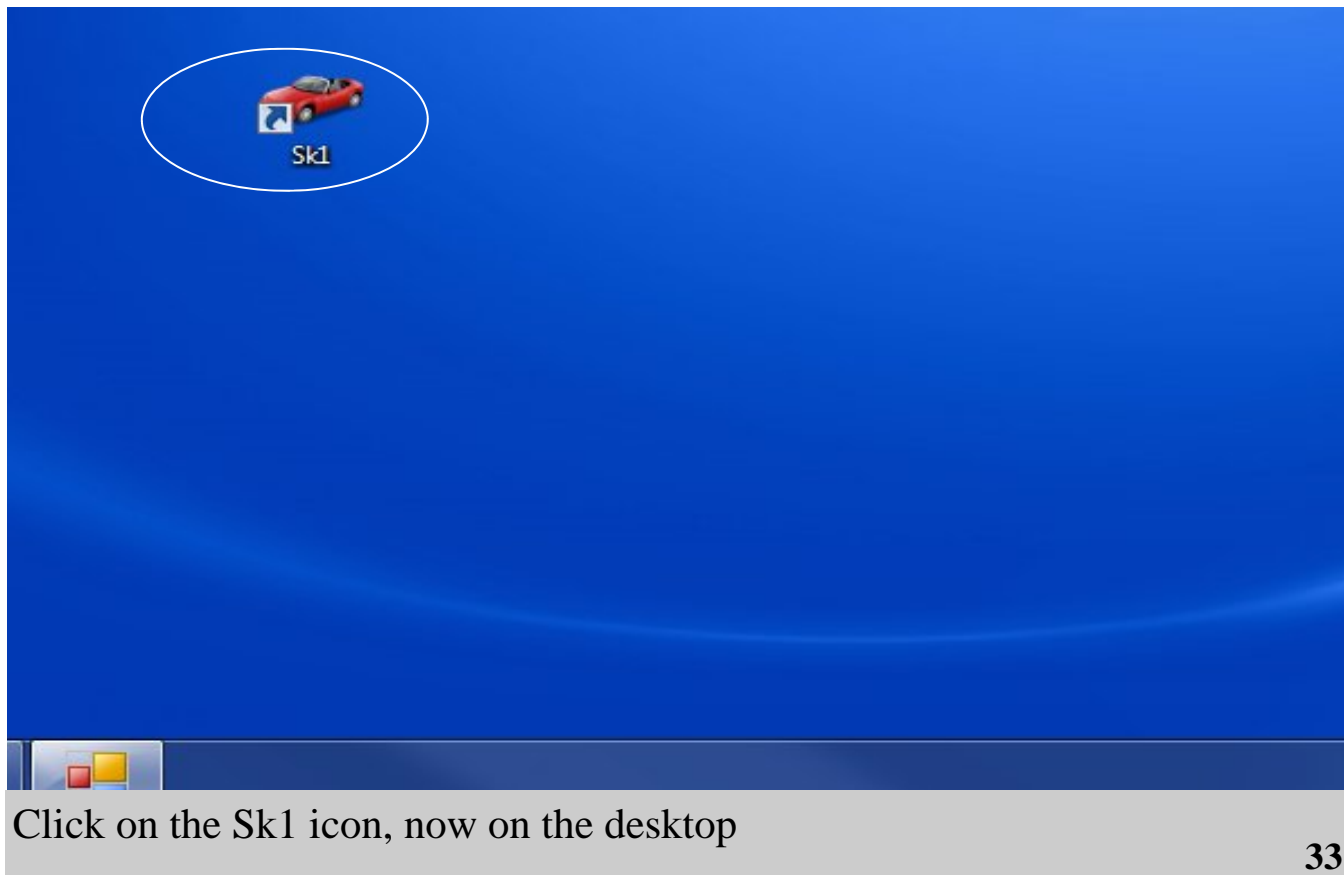
Click OK





Click Exit to close ScoreKeyper setup menu







Locating database files...


Standby for about twenty seconds

## Modify Config File

Server Name:

User ID:

Password:  (case sensitive)



Server Name: Type in the name of your computer

User ID = sa

Password = 123

Click Save & Close

Configuration file successfully updated!

---

Note: If connection errors should persist:

1. Check spelling
2. Verify database attachment

A rectangular button with a light blue gradient and a thin blue border, containing the text "OK". The button is circled in red.

OK

Click OK

Restart ScoreKeeper by clicking the Sk1 icon on the desktop

## Activation

Call tech support to activate



Code:

789694


Cancel

Activate

Almost there!

Call tech support (800-507-1747) to get activation code

37



Dealer Info

Name:

Din:

Street:

Address 2:

City:

State: PA

Zip:

Phone:

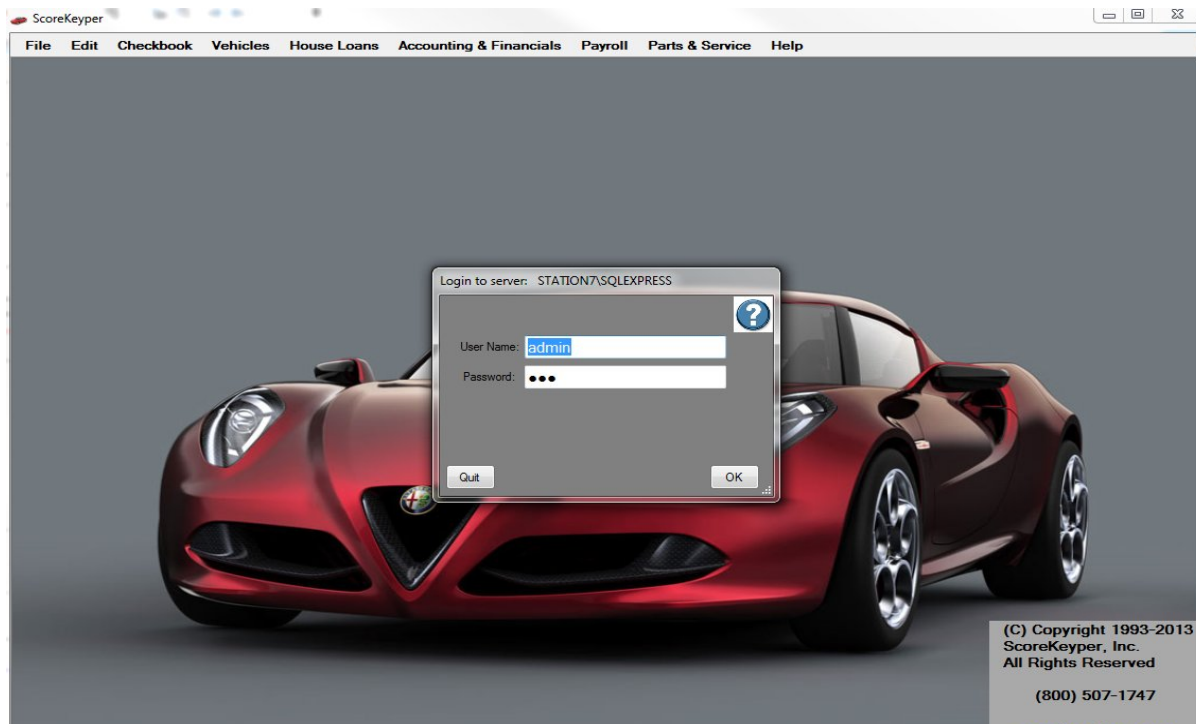
Fax:

Web Site:

Cancel Edit Save & Close

(C) Copyright 1993-2013  
ScoreKeyper, Inc.  
All Rights Reserved  
(800) 507-1747

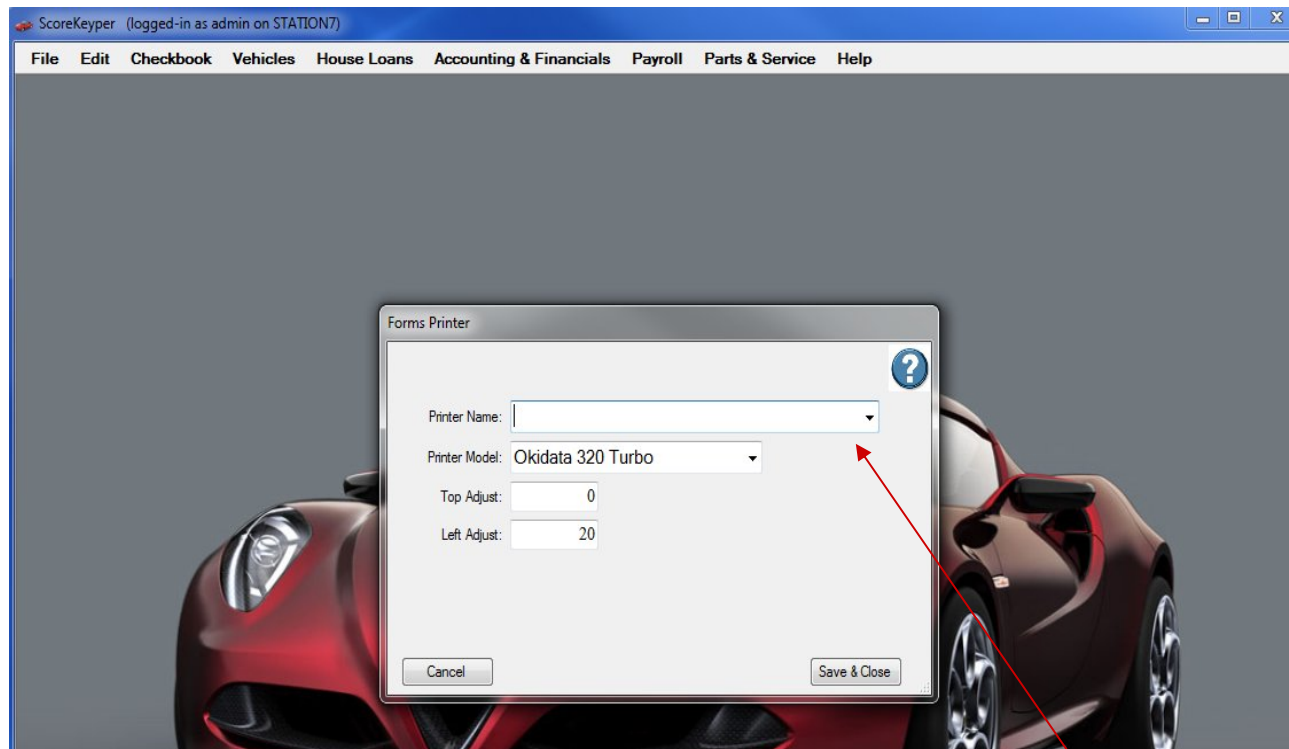
## Enter your dealer information



Default login: (can be changed later, if desired)

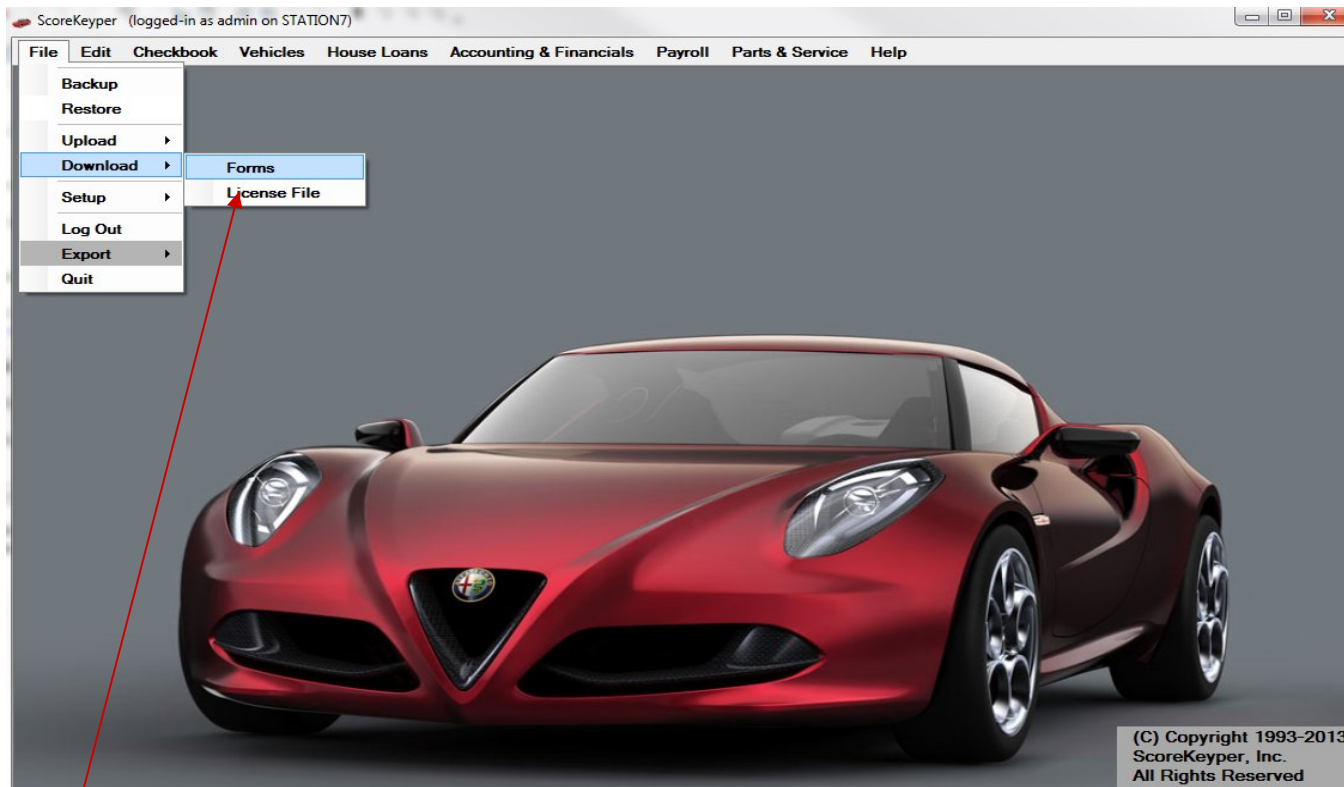
User Name: admin

Password: 123

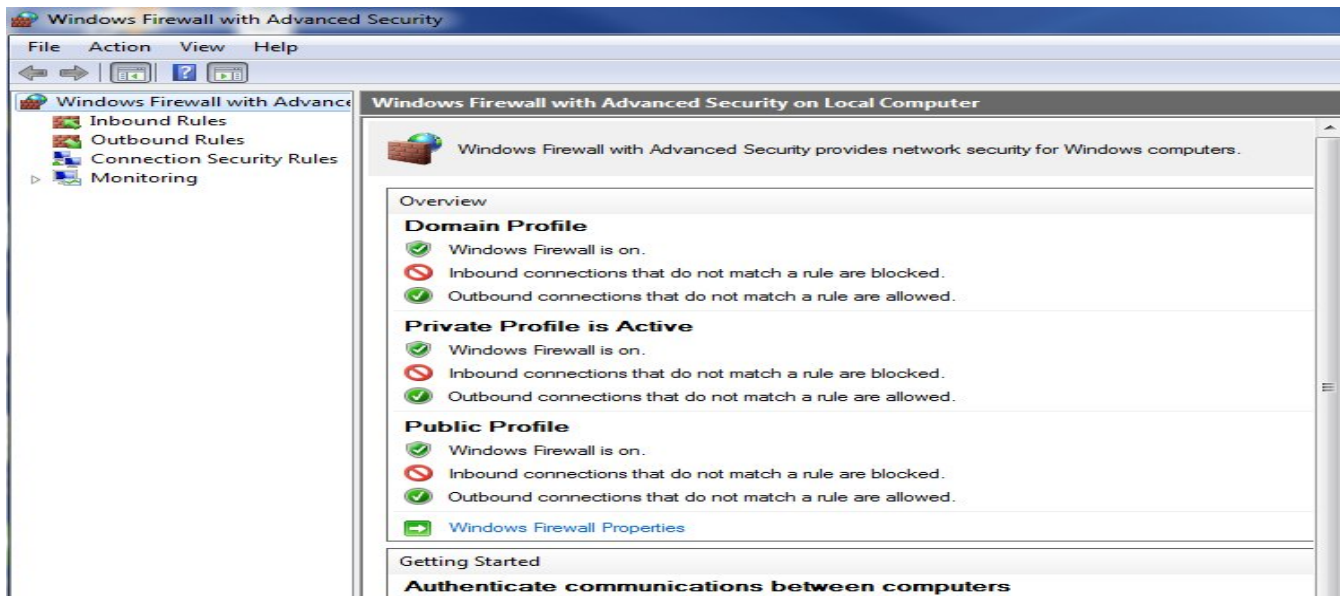


Click File / Setup / Forms Printer (refer to pages 46 –55)  
Select your Okidata printer from top dropdown list (Printer Name:)





Download forms directly from our website, as shown.



**Before installing to workstations, complete the following:**

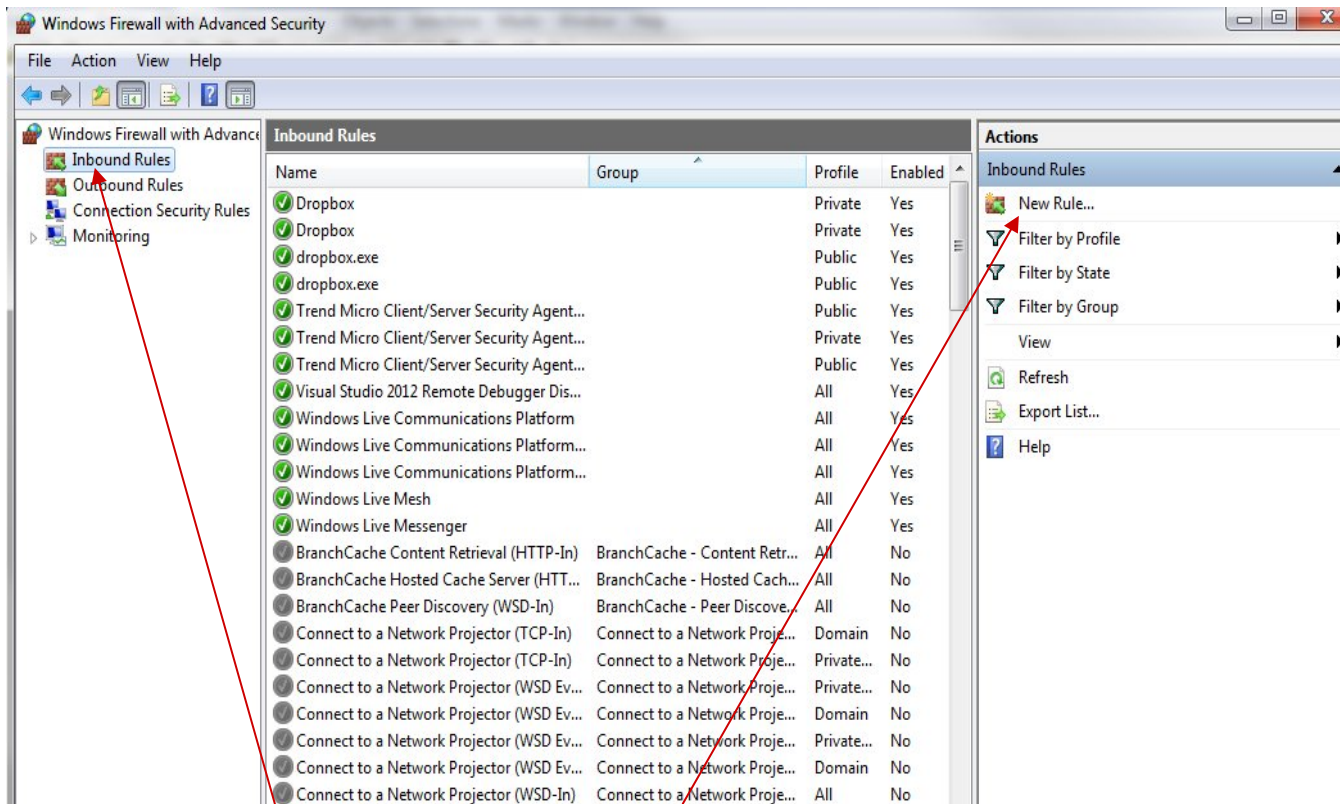
If Windows XP, Vista, 7:

Click the Windows start button

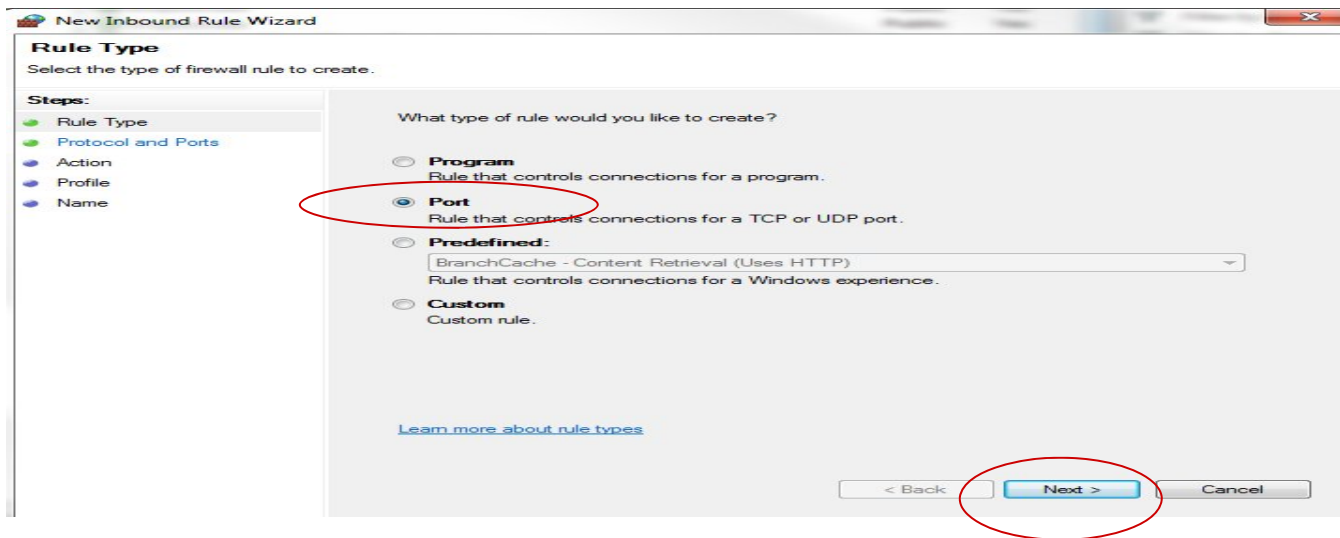
In the white box just above the start button, type [firewall](#)

IF Windows 8:

Click the [Search](#) icon, then click [Settings](#), then click [Windows Firewall](#)



1. Click Inbound Rules, then click New Rule



Click Port, then click Next

**Complete the following (no screen shots):**

- Type 1433 in the white box, then click Next
- Click Allow the connection, then click Next
- Check all three boxes, then click Next
- Type 1433 for the name of this rule
- Click Finish



Install to workstations:  
Click ScoreKeyper 32b - Workstation if a 32-bit machine OR  
Click ScoreKeyper 64b - Workstation if a 64-bit machine

## Step One of Five - Add a Local Printer to Windows

IF Windows XP, Vista, 7:

Click the Windows start button, then Control Panel (Or Settings, then Control Panel)

Click Devices and Printers

IF Windows 8:

Click the Search icon, then Settings, then type in Printers

Click Devices and Printers

Continue:

Click Add a Printer from the menu bar near the top of the screen.

Click Add a local printer. (If the printer is a network printer, Click Add a network printer instead.)

Select a printer port. Click Next.

Scroll down and click *Oki* as the manufacturer, and *OKI MICROLINE 320 TURBO* as the printer model. Click Next.

Check Keep existing driver, if applicable. Click Next.

If the printer is attached directly to your computer, check Do not share this printer

Click Next to finish.

## Step Two of Five – Setup a Custom Form in Windows

IF Windows XP, Vista, 7:

Click Devices and Printers.

Click to highlight the Oki printer icon.

Click Print server properties.

IF Windows 8:

Click the Search icon, then Settings, then type in Printers

Click View Devices and Printers

Click Print server properties

Continue:

Check the box next to Create a new Form.

Change the Form name to Sk

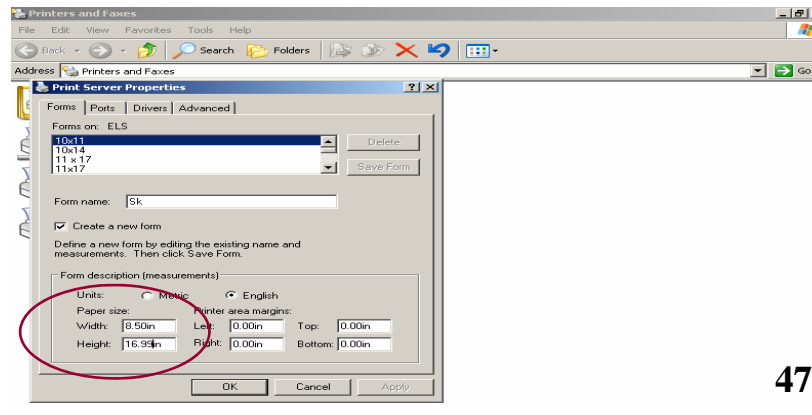
Select English as the Unit of Measurement

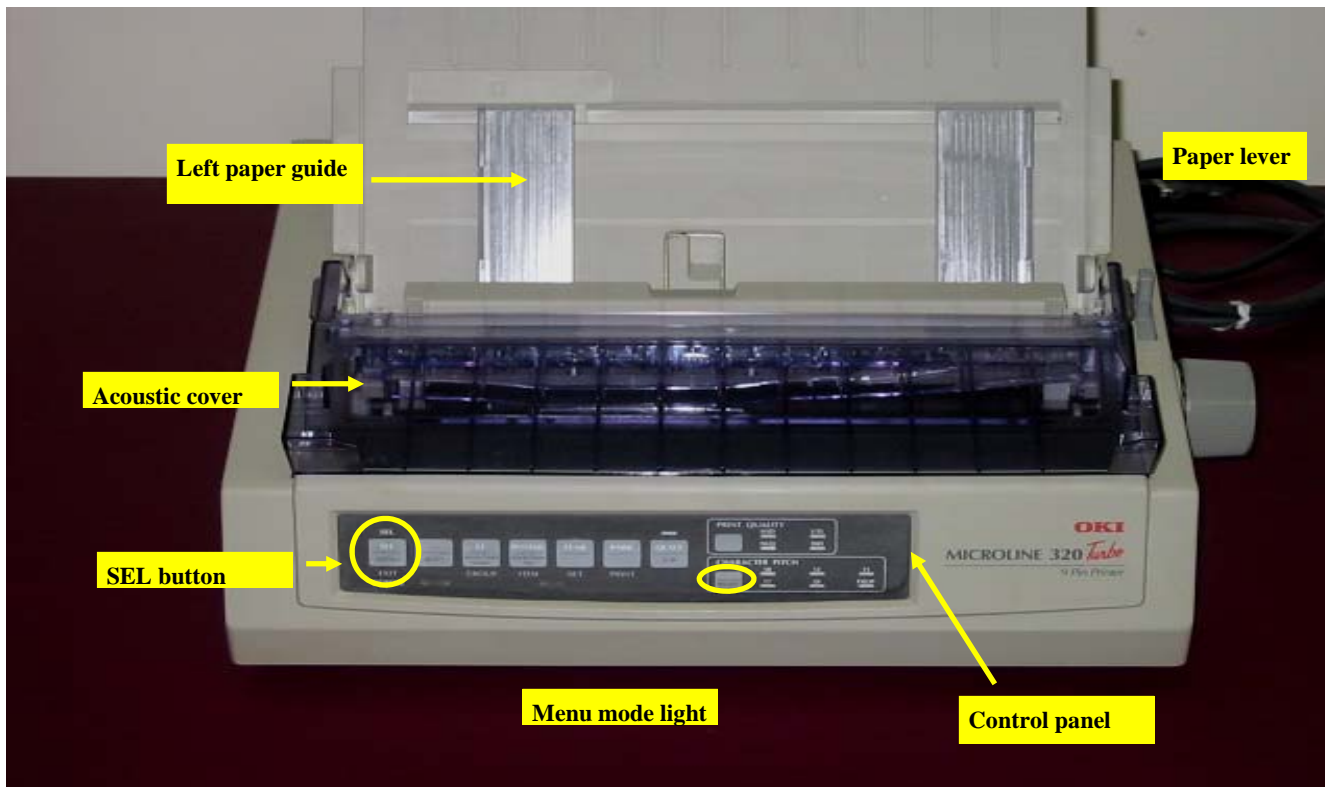
Set the Width to 8.50in,

Set the Height to 16.99in, as shown.

Click Save Form.

Click Close.





OKI MICROLINE 320 *Turbo* printer



## Step Three of Five - Reset the Top of Form on the Okidata Printer

(Top of Form is the position on a form where the first line of print will occur. This position needs to be reset from the factory default in order to work properly with ScoreKeyper. The Okidata printer will then load each form to this new position, approximately 1/8" from the top.)

1. Place the paper lever in the position marked *TOP*. (Refer to diagram on previous page)
2. Move the left paper guide all the way to the right until it hits the tab stop, as shown.
3. Load a test form into the printer (printed-side away from you, and upside down).  
The form will feed into the printer automatically, so be careful to load it squarely with both hands.
4. Make sure the printer is deselected (that means the SEL light is off).
5. Press and hold the Shift button down, then press and hold the LF button down as shown on next page.  
You will hear a clicking sound, and see the paper moving down as you do this.
6. Continue to move the paper down until the red line on the print shield is about 1/8 inch below the top of the test form to be printed.
7. Now press the SEL button to select the printer.
8. Press the FF/LOAD button to eject the test form.



## Step Four of Five – Test Printer Alignment

1. Load one of your forms into the printer (printed-side away from you, and upside down).  
The form will feed into the printer automatically, so be careful to load it squarely with both hands.
2. Start ScoreKeyper by *double-clicking* the icon on your desktop.
3. Click Vehicles / Print Forms on Okidata 320
4. Select a stock number and the form you are test printing.
5. Click View Form.
6. Make sure to press the SEL button on your printer , so that the SEL light is on.
7. Click Print.

12. If the software is printing too high above the line...  
Load the test form once again.  
Make sure the printer is deselected (the SEL light is off). Press and hold the Shift button down, then press and hold the FF/LOAD button down, as shown to the right. You will hear a clicking sound, and see the paper moving *up* as you do this. Move the paper up three or four clicks as necessary.



- If the software is printing too low below the line...  
Load the test form once again.  
Make sure the printer is deselected (the SEL light is off).  
Press and hold the Shift button down, then press and hold the LF button down, as shown to the right. You will hear a clicking sound, and see the paper moving *down* as you do this. Move the paper down three or four clicks as necessary.



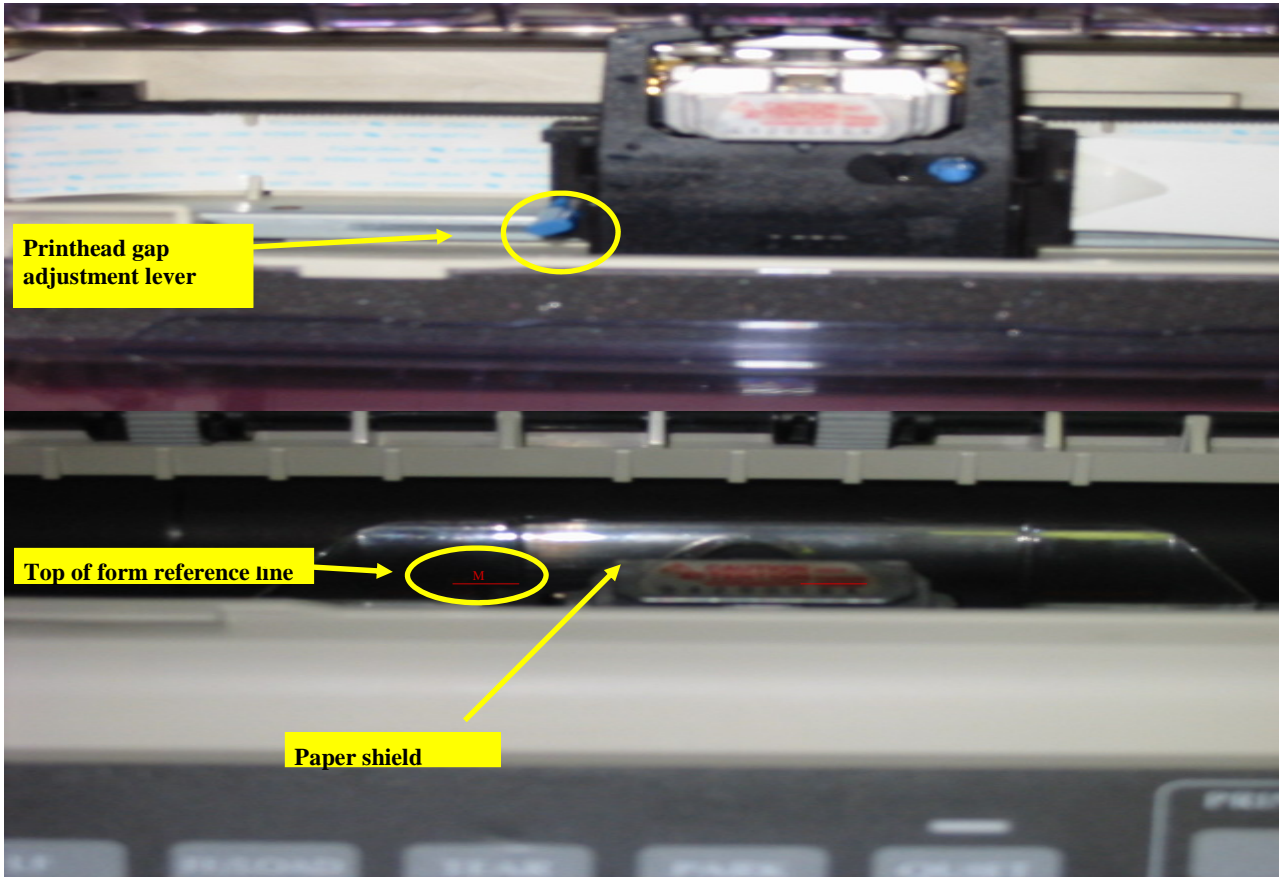
13. Now press the SEL button to select the printer.
14. Press the FF/LOAD button to eject the test form.
15. Load the test form into the printer again.  
The paper will feed into the printer automatically, so be careful to load the paper squarely with both hands.
16. Make sure to press the SEL button on your printer, then click Print.

## Step Five of Five – Additional Settings

(Several additional settings need to be reset from the factory default in order for the Okidata printer to work properly with ScoreKeyper.)

1. Load a blank sheet of paper into the printer.
2. Turn the printer off.
3. Press and hold the two buttons, as shown, while you turn the printer back on. You will see the word *Menu* light up on the control panel.
4. Press the LF button six times. Each time you press the button, a line of text will print out. Stop when you see the words **Top Feed** print out.
5. Now press the FF/LOAD button twice, until the printout reads **Top Feed Page Length**.
6. Press the TEAR button four times, until the printout reads **Top Feed Page Length 17**.
7. Now press the LF button once. The printout should read: **Set-Up Graphics**.
8. Press the FF/LOAD button twice, until the printout reads **Set-Up Paper Out Override**.
9. Press the TEAR button once, so that the printout reads “**Set-Up Paper Out Override Yes**.”
10. To exit the Menu mode, press and hold the Shift button, and then press the Sel button, as shown on the next page. The Menu light will go off.
11. Lift the acoustic cover to access the print head gap adjustment lever. Pull this blue lever back to the highest setting, to allow for thicker forms. (See page 55)







Good to go!

**ScoreKeyper, Inc.**

600 First Street

Apollo, PA 15613

800-507-1747

[www.ScoreKeyper.com](http://www.ScoreKeyper.com)